

# Cochlear Implant Services for adults



# We deliver Australia's largest and most comprehensive cochlear implant program.



Each year:

## 400+

people receive cochlear implants through NextSense

## 6,000+

people receive ongoing care and support through NextSense

## Our difference



We're for everyone, right across Australia.



Australia's largest cochlear implant program.



Our dedicated people.



Not-for-profit service.



Registered NDIS provider.

# Redefining what's possible

NextSense is a not-for-profit organisation supporting people who are deaf, hard of hearing, blind or have low vision across Australia for over 160 years.

We work with children, adults and their families to educate and create an individual program of care that meets their unique needs. We're a registered NDIS provider, and we work with you and your family to help your child achieve their goals and potential. With the support of generous donations, NextSense provides vital support for children and adults, more cochlear implants than any other service in Australia, and is a world leader for research, technology and professional education in our field.

# About cochlear implants

A cochlear implant is a hearing device that stimulates the hearing nerve, known as the cochlea or auditory nerve, to provide access to high-quality, more detailed sound.

Unlike hearing aids, which amplify sound, cochlear implants provide direct access to the cochlear, often making it easier to:



understand speech and interact with others



hear in loud environments



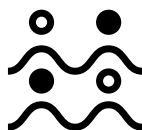
locate where sound is coming from



connect with the world around you



Cochlear implants have been in use for **more than 40 years**.



There are **over 500,000** cochlear implant recipients worldwide.



**Age isn't a barrier**—our youngest recipient was three months, and the oldest in their nineties.

# Is a cochlear implant right for me?

With hearing aids on, do you find it difficult to hear:

1

on the phone?

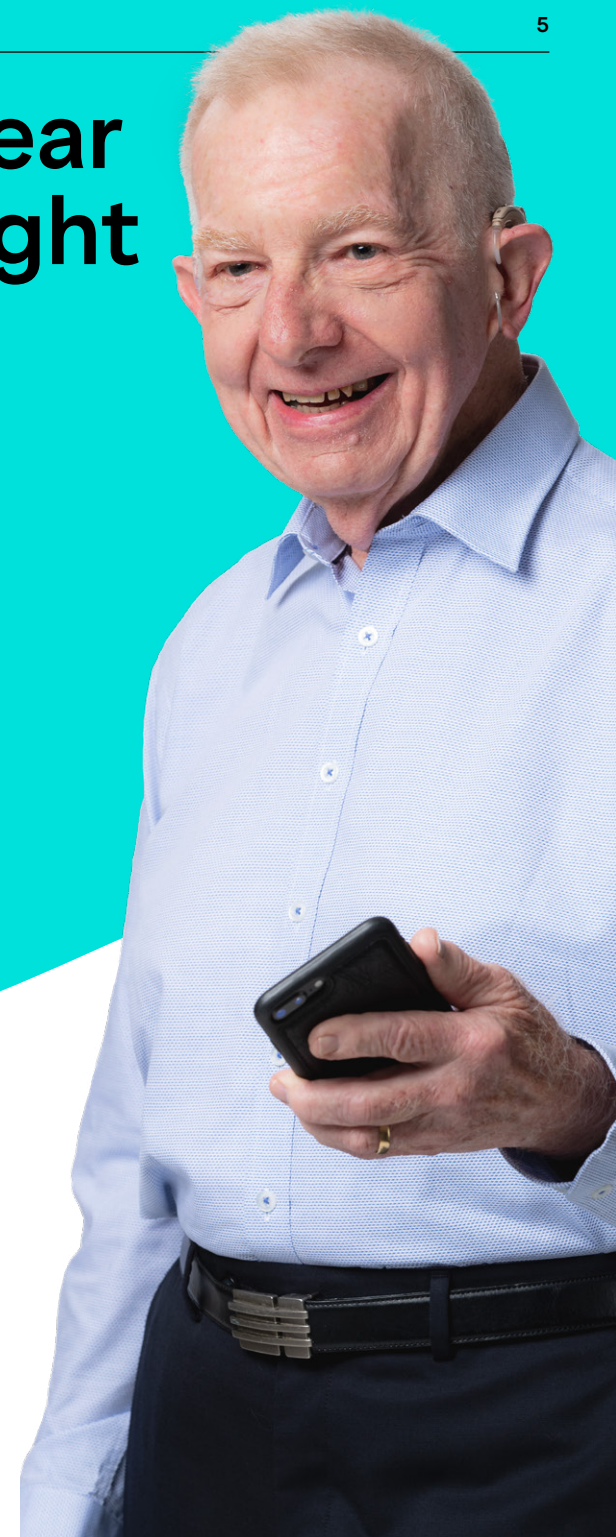
2

in crowded places?

3

children's voices clearly?

If you answered no to any of these questions, a cochlear implant may be right for you.







**“...cochlear implants have made a world of difference to me, and I am eternally grateful for the amazing gift I have been given.”**

'...I stopped listening to people, became more isolated, socialised less and, when I did go out, would avoid conversation. In the end my family started talking around me, not with me. I ended up feeling depressed and alone, despite having a wonderfully supportive family and good friends.

Everyone is different. For me, the loss of hearing led me to a very dark hole that I struggled to survive in. Everything was joyless ... cochlear implants gave me a way out of that hole. That's what they have given me. Not just hearing but a better quality of life, hope and hearing.

...an investment in the adult cochlear implant program is a great investment in society because it enables people with a world of experience to stay involved and continue to contribute to society in ways they would struggle to do if they didn't have cochlear implants. I am able to work full time and ... am looking forward to spending time with my grandchildren, when they arrive!

**Alan Edwards**  
**Adult cochlear implant recipient**

# We help you explore your options

Cochlear implants are suited to people with moderate to profound hearing loss in one or both ears.

The technology is specifically designed for people with sensorineural hearing loss, meaning the loss is caused by damage to the inner ear. This can be the result of the ageing process, illness, or unknown causes—and can occur at any age.

Whether your hearing loss has been gradual, or it has occurred suddenly, a cochlear implant can increase access to sound, even in noisy environments, to help you live life to the fullest.

Your personal circumstances, including the type and degree of your hearing loss, your general health, and your

desired outcomes are all factors that determine your best solution. That's where we help—and can determine whether a cochlear implant or bone conduction implant is right for you. We provide you with the information, advice and support you need to make the best decision for you.

## Why does hearing loss need to be addressed?

As hearing loss worsens and people withdraw from social activities, wellbeing and mental health are at risk.

Hearing loss is the number one, biggest modifiable risk for dementia in middle age.<sup>1</sup>



## Did you know?

# 92%

of adults who could benefit from this life-changing technology haven't yet explored it?

If that's you, make today the day you take the step to redefining what's possible.

## understood sentences 8 times better

Adults receiving cochlear implants understood sentences on average almost 8 times better than they could previously with hearing aids?<sup>2</sup>

- 1 Livingston, G. et al 'Dementia prevention, intervention, and care: 2020 report of the Lancet Commission', THE LANCET COMMISSIONS|VOLUME 396, ISSUE 10248, P41,3-446, AUGUST 08, 2020
- 2 Runge CL, Henion K, Tarima S, Beiter A, & Zwolan TA. Clinical Outcomes of the Cochlear™ Nucleus® 5 Cochlear Implant System and SmartSound™ 2 Signal Processing. J Am Acad Audiology 27:425-440. (2016)



# How does a cochlear implant work?

A cochlear implant bypasses the damaged parts of the inner ear by electrically stimulating the hearing nerve. The nerve then sends a signal to the brain where it is interpreted as sound.

A cochlear implant has both internal and external parts.



The **internal parts** are implanted via a surgical procedure.

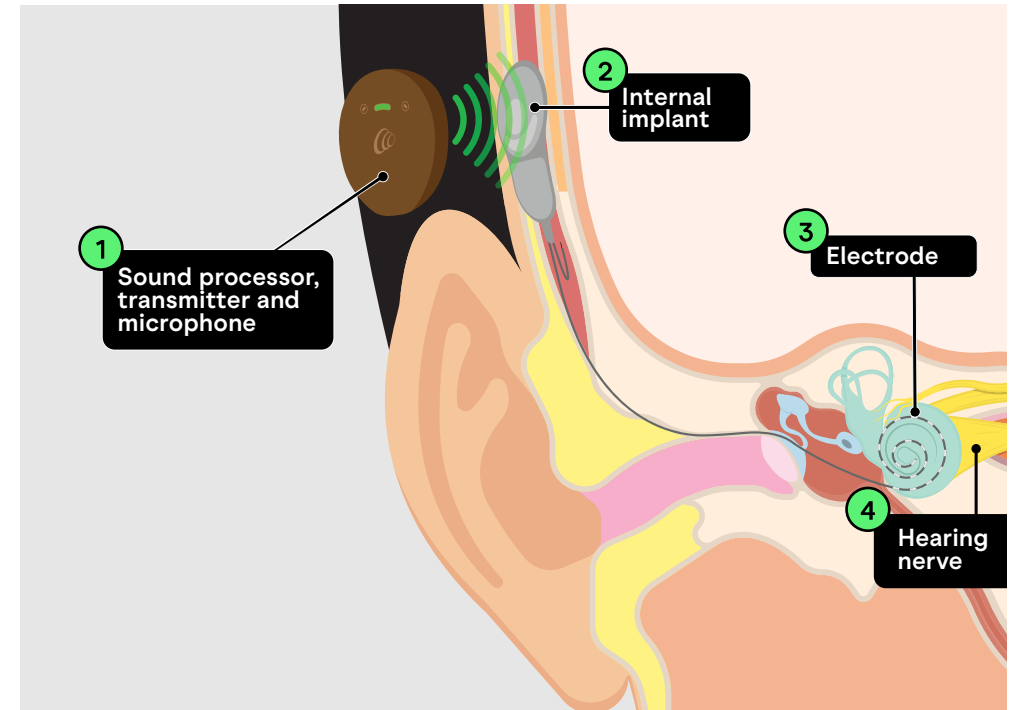
- The receiver and magnet are placed under the skin behind the ear.
- The electrode array (a series of electrodes) is placed in the cochlea.

The **external parts** are worn on the outside of the ear and can be put on and removed by the recipient, or by a parent or caregiver. The external

parts of a cochlear implant can be upgraded as technology advances without additional surgery. They are:

- The sound processor, which is powered by batteries and looks similar to a hearing aid.
- The cable and circular coil connected to the sound processor, that's usually held on the head by a magnet. There are also off-the-ear options that may suit some people.

# Cochlear implants provide direct access to sound



**1** Sound is received by the microphone of the sound processor and processed into digital signals then transmitted.

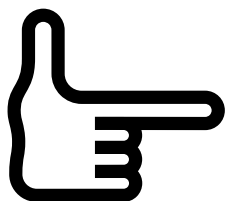
**3** Electrical signals are sent to the electrode array to stimulate the hearing nerve fibres in the inner ear (cochlea).

**2** The processor sends the digital signals across the skin where it's converted into electrical signals by the internal device.

**4** Signals are then sent, via the hearing nerve to the brain, and recognised as sound.

# Your journey with NextSense

We are with you every step of the way, from the first consultation to a lifetime of care and support.



①

**Assessment**—understanding whether a cochlear implant could help you

②

**Consultation**—exploring your options

③

**Surgery**—undergoing your cochlear implantation procedure

## Our information sessions

Discover how you could benefit from a hearing implant system and learn about the journey from a cochlear implant recipient.



[nextsense.org.au/dhi](https://nextsense.org.au/dhi)



④

**Switch-on**—switching your implant on

⑤

**Ongoing care**—increasing your access to sound

⑥

**Support for life**—accessing tailored care and ongoing support

# Cost is no barrier at NextSense

Our cochlear implant program gives you access to a range of funding options to support you on your journey.



From initial assessments to ongoing mapping, all in-person cochlear implant services are bulk-billed at NextSense.



We assist clients to access NDIS funding for equipment and services.

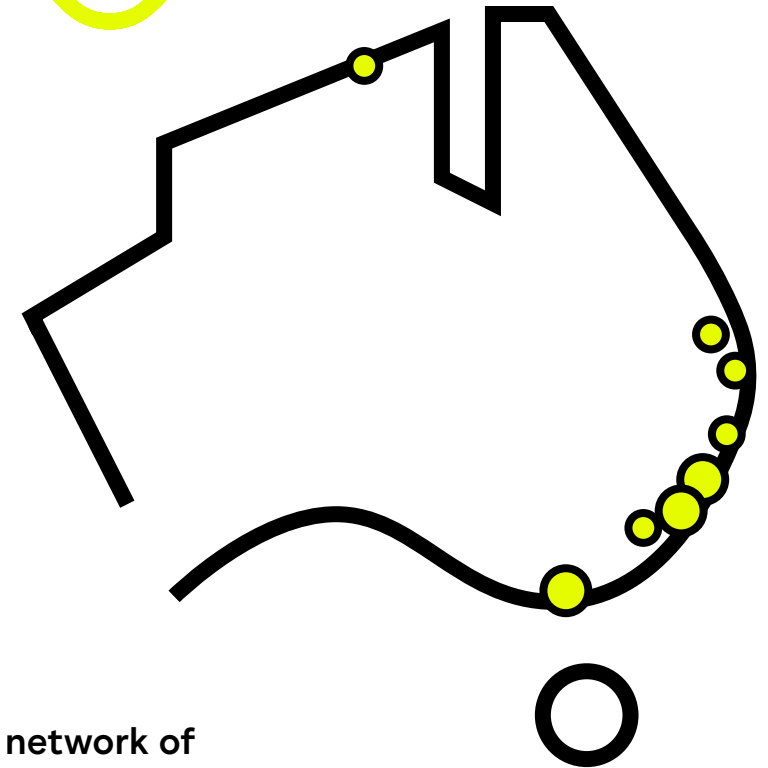


Both public and private surgeries available.

If you are an Australian resident covered by Medicare, cochlear implants and our support services generally come with no out-of-pocket cost. We're able to provide our services through government funding, private health insurance, and support from donations. There are state, territory, and charity-funded support schemes to assist with travel and accommodation for families in regional areas to help access our services.

Our NextSense team will help you explore the funding available.

# Our locations



## An extensive network of 20 centres

**We support people wherever they are in Australia, via Connected Services and telepractice.**

NextSense has a network of centres across Australia, in cities and regional areas in NSW, ACT, VIC, QLD and NT. For those who can't access or don't live near a centre, NextSense Connected Services can provide access to in-home therapy services via high-quality video conferencing.





**Take the  
next  
step**



**1300 581 391**



**hello@nextsense.org.au**

We'll connect you with an experienced team member to discuss your needs.